

TUB Rabbit Polyclonal Antibody



CAB17545

Product Information

Size:

20uL, 50uL, 100uL, 200uL

Observed MW:

56kDa

Calculated MW:

Applications:

WB

Reactivity:

Human, Rat

Antibody Information

Recommended dilutions:

WB 1:500 - 1:2000

Source:

Rabbit

Isotype:

IgG

Purification:

Affinity purification

Protein Background

This gene encodes a member of the Tubby family of bipartite transcription factors. The encoded protein may play a role in obesity and sensorineural degradation. The crystal structure has been determined for a similar protein in mouse, and it functions as a membrane-bound transcription regulator that translocates to the nucleus in response to phosphoinositide hydrolysis. Two transcript variants encoding distinct isoforms have been identified for this gene. [provided by RefSeq, Jul 2008]

Immunogen information

Gene ID:

7275

Uniprot

P50607

Synonyms:

RDOB; rd5; TUB

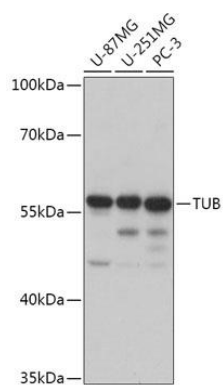
Immunogen:

Recombinant fusion protein containing a sequence corresponding to amino acids 130-230 of human TUB (NP_003311.2).

Storage:

Store at -20°C. Avoid freeze / thaw cycles. Buffer: PBS with 0.02% sodium azide, 50% glycerol, pH7.3.

Product Images



Western blot - TUB Polyclonal Antibody (CAB17545)