

POLR2E Rabbit Polyclonal Antibody



CAB1755

Product Information

Size:

20uL, 50uL, 100uL, 200uL

Observed MW:

26kDa

Calculated MW:

24kDa

Applications:

WB IHC IF

Reactivity:

Human

Protein Background

This gene encodes the fifth largest subunit of RNA polymerase II, the polymerase responsible for synthesizing messenger RNA in eukaryotes. This subunit is shared by the other two DNA-directed RNA polymerases and is present in two-fold molar excess over the other polymerase subunits. An interaction between this subunit and a hepatitis virus transactivating protein has been demonstrated, suggesting that interaction between transcriptional activators and the polymerase can occur through this subunit. A pseudogene is located on chromosome 11. Three transcript variants encoding two different isoforms have been found for this gene.

Immunogen information

Gene ID:

5434

Uniprot

P19388

Synonyms:

POLR2E; RPABC1; RPB5; XAP4; hRPB25; hsRPB5

Antibody Information

Recommended dilutions:

WB 1:500 - 1:2000 IHC 1:50
- 1:100 IF 1:50 - 1:200

Source:

Rabbit

Isotype:

IgG

Purification:

Affinity purification

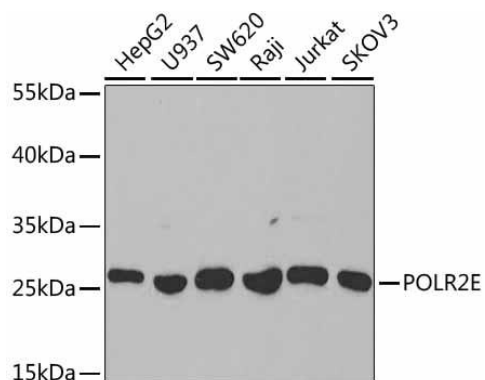
Immunogen:

Recombinant fusion protein containing a sequence corresponding to amino acids 1-210 of human POLR2E (NP_002686.2).

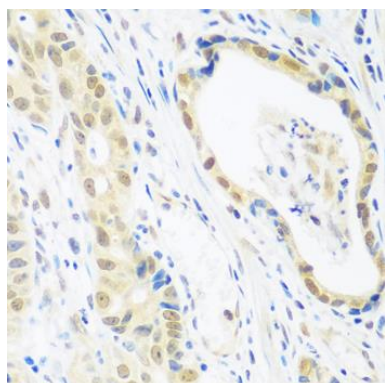
Storage:

Store at -20°C. Avoid freeze / thaw cycles. Buffer: PBS with 0.02% sodium azide, 50% glycerol, pH7.3.

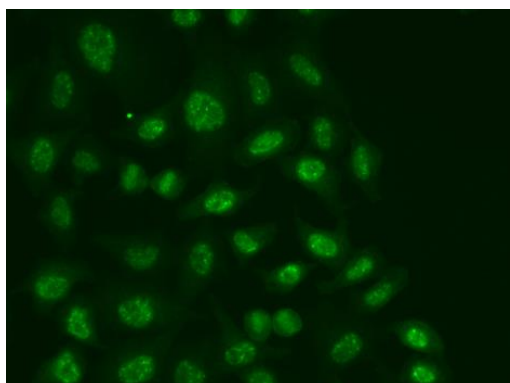
Product Images



Western blot analysis of extracts of various cell lines, using POLR2E antibody (CAB1755) at 1:1000 dilution. Secondary antibody: HRP Goat Anti-Rabbit IgG (H+L) (CABS014) at 1:10000 dilution. Lysates/proteins: 25ug per lane. Blocking buffer: 3% nonfat dry milk in TBST.



Immunohistochemistry of paraffin-embedded human stomach cancer using POLR2E antibody (CAB1755) at dilution of 1:100 (40x lens).



Immunofluorescence analysis of A549 cells using POLR2E antibody (CAB1755).