

OFD1 Rabbit Polyclonal Antibody



CAB17567

Product Information

Size:

20uL, 50uL, 100uL, 200uL

Observed MW:

117kDa

Calculated MW:

42kDa/111kDa/116kDa

Applications:

WB

Reactivity:

Human, Mouse

Protein Background

This gene is located on the X chromosome and encodes a centrosomal protein. A knockout mouse model has been used to study the effect of mutations in this gene. The mouse gene is also located on the X chromosome, however, unlike the human gene it is not subject to X inactivation. Mutations in this gene are associated with oral-facial-digital syndrome type I and Simpson-Golabi-Behmel syndrome type 2. Many pseudogenes have been identified; a single pseudogene is found on chromosome 5 while as many as fifteen have been found on the Y chromosome. [provided by RefSeq, Aug 2016]

Immunogen information

Gene ID:

8481

Uniprot

O75665

Synonyms:

71-7A; CXorf5; JBTS10; RP23; SGBS2; OFD1

Antibody Information

Recommended dilutions:

WB 1:500 - 1:2000

Source:

Rabbit

Isotype:

IgG

Purification:

Affinity purification

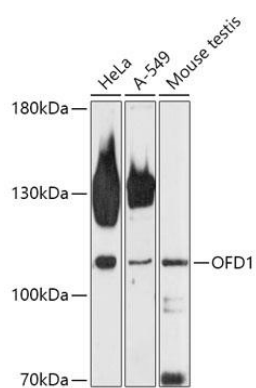
Immunogen:

Recombinant fusion protein containing a sequence corresponding to amino acids 763-1012 of human OFD1 (NP_003602.1).

Storage:

Store at -20°C. Avoid freeze / thaw cycles. Buffer: PBS with 0.02% sodium azide, 50% glycerol, pH7.3.

Product Images



Western blot - OFD1 Polyclonal Antibody (CAB17567)