

# RRP1 Rabbit Polyclonal Antibody



CAB17569

## Product Information

### Size:

20uL, 50uL, 100uL, 200uL

### Observed MW:

53kDa

### Calculated MW:

52kDa

### Applications:

WB

### Reactivity:

Human, Mouse, Rat

## Protein Background

The protein encoded by this gene is the putative homolog of the yeast ribosomal RNA processing protein RRP1. The encoded protein is involved in the late stages of nucleologenesis at the end of mitosis, and may be required for the generation of 28S rRNA. [provided by RefSeq, Jul 2008]

## Immunogen information

### Gene ID:

8568

### Uniprot

P56182

### Synonyms:

D21S2056E; NNP-1; NOP52; RRP1A; RRP1

## Antibody Information

### Recommended dilutions:

WB 1:500 - 1:2000

### Source:

Rabbit

### Isotype:

IgG

### Purification:

Affinity purification

### Immunogen:

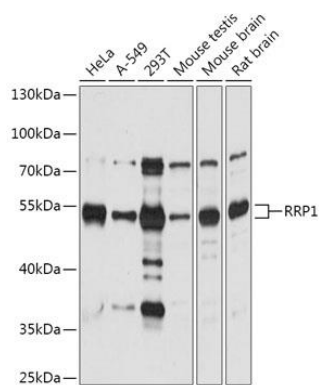
Recombinant fusion protein containing a sequence corresponding to amino acids 26-253 of human RRP1 (NP\_003674.1).

### Storage:

Store at -20°C. Avoid freeze / thaw cycles. Buffer: PBS with 0.02% sodium azide, 50% glycerol, pH7.3.

## Product Images

---



Western blot - RRP1 Polyclonal Antibody (CAB17569)