

TMEM11 Rabbit Polyclonal Antibody



CAB17578

Product Information

Size:

20uL, 50uL, 100uL, 200uL

Observed MW:

22kDa

Calculated MW:

21kDa

Applications:

WB IF

Reactivity:

Human, Mouse, Rat

Antibody Information

Recommended dilutions:

WB 1:500 - 1:2000 IF 1:50 - 1:200

Source:

Rabbit

Isotype:

IgG

Purification:

Affinity purification

Protein Background

Immunogen information

Gene ID:

8834

Uniprot

P17152

Synonyms:

C17orf35; PM1; PMI; TMEM11

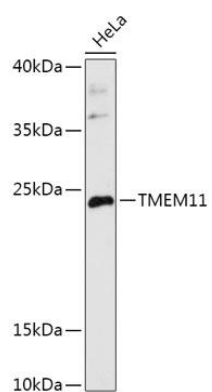
Immunogen:

Recombinant fusion protein containing a sequence corresponding to amino acids 1-80 of human TMEM11 (NP_003867.1).

Storage:

Store at -20°C. Avoid freeze / thaw cycles. Buffer: PBS with 0.02% sodium azide, 50% glycerol, pH7.3.

Product Images



Western blot - TMEM11 Polyclonal Antibody (CAB17578)