

MGAM Rabbit Polyclonal Antibody



CAB17584

Product Information

Size:

20uL, 50uL, 100uL, 200uL

Observed MW:

190kDa

Calculated MW:

Applications:

WB

Reactivity:

Human

Antibody Information

Recommended dilutions:

WB 1:500 - 1:2000

Source:

Rabbit

Isotype:

IgG

Purification:

Affinity purification

Protein Background

This gene encodes maltase-glucoamylase, which is a brush border membrane enzyme that plays a role in the final steps of digestion of starch. The protein has two catalytic sites identical to those of sucrase-isomaltase, but the proteins are only 59% homologous. Both are members of glycosyl hydrolase family 31, which has a variety of substrate specificities. [provided by RefSeq, Jul 2008]

Immunogen information

Gene ID:

8972

Uniprot

O43451

Synonyms:

MG; MGA; MGAM

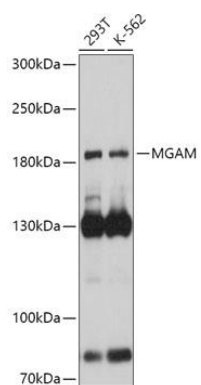
Immunogen:

Recombinant fusion protein containing a sequence corresponding to amino acids 860-1090 of human MGAM (NP_004659.2).

Storage:

Store at -20°C. Avoid freeze / thaw cycles. Buffer: PBS with 0.02% sodium azide, 50% glycerol, pH7.3.

Product Images



Western blot - MGAM Polyclonal Antibody (CAB17584)