

# B4GALT5 Rabbit Polyclonal Antibody



CAB17590

## Product Information

### Size:

20uL, 50uL, 100uL, 200uL

### Observed MW:

45KDa

### Calculated MW:

### Applications:

WB

### Reactivity:

Human, Rat

## Antibody Information

### Recommended dilutions:

WB 1:500 - 1:2000

### Source:

Rabbit

### Isotype:

IgG

### Purification:

Affinity purification

## Protein Background

This gene is one of seven beta-1, 4-galactosyltransferase (beta4GalT) genes. They encode type II membrane-bound glycoproteins that appear to have exclusive specificity for the donor substrate UDP-galactose; all transfer galactose in a beta1, 4 linkage to similar acceptor sugars: GlcNAc, Glc, and Xyl. Each beta4GalT has a distinct function in the biosynthesis of different glycoconjugates and saccharide structures. As type II membrane proteins, they have an N-terminal hydrophobic signal sequence that directs the protein to the Golgi apparatus and which then remains uncleaved to function as a transmembrane anchor. By sequence similarity, the beta4GalTs form four groups: beta4GalT1 and beta4GalT2, beta4GalT3 and beta4GalT4, beta4GalT5 and beta4GalT6, and beta4GalT7. The function of the enzyme encoded by this gene is not clear. This gene was previously designated as B4GALT4 but was renamed to B4GALT5. In the literature it is also referred to as beta4GalT2. [provided by RefSeq, Jul 2008]

## Immunogen information

### Gene ID:

9334

### Uniprot

O43286

### Synonyms:

B4Gal-T5; BETA4-GALT-IV; beta4Gal-T5; beta4GalT-V; gt-V; B4GALT5

### Immunogen:

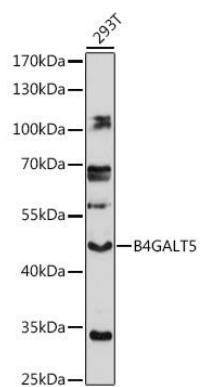
Recombinant fusion protein containing a sequence corresponding to amino acids 60-160 of human B4GALT5 (NP\_004767.1).

### Storage:

Store at -20°C. Avoid freeze / thaw cycles. Buffer: PBS with 0.02% sodium azide, 50% glycerol, pH7.3.

## Product Images

---



Western blot - B4GALT5 Rabbit pAb (CAB17590)