

SUPT7L Rabbit Polyclonal Antibody



CAB17601

Product Information

Size:

20uL, 50uL, 100uL, 200uL

Observed MW:

60kDa

Calculated MW:

30kDa/45kDa/46kDa

Applications:

WB

Reactivity:

Human, Mouse, Rat

Protein Background

SUPT7L is a protein subunit of the human STAGA complex (SPT3; (MIM 602947)/TAF9 (MIM 600822)/GCN5 (MIM 602301) acetyltransferase complex), which is a chromatin-modifying multiprotein complex (Martinez et al., 2001 [PubMed 11564863]).[supplied by OMIM, Apr 2009]

Immunogen information

Gene ID:

9913

Uniprot

O94864

Synonyms:

SPT7L; STAF65; STAF65(gamma); STAF65G; SUPT7H; SUPT7L

Antibody Information

Recommended dilutions:

WB 1:500 - 1:2000

Source:

Rabbit

Isotype:

IgG

Purification:

Affinity purification

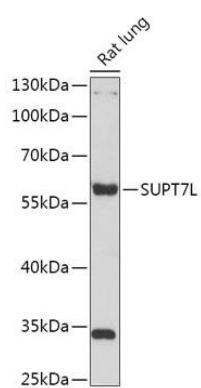
Immunogen:

Recombinant fusion protein containing a sequence corresponding to amino acids 210-400 of human SUPT7L (NP_001269658).

Storage:

Store at -20°C. Avoid freeze / thaw cycles. Buffer: PBS with 0.02% sodium azide, 50% glycerol, pH7.3.

Product Images



Western blot - SUPT7L Polyclonal Antibody (CAB17601)