

TOM1L1 Rabbit Polyclonal Antibody



CAB17602

Product Information

Size:

20uL, 50uL, 100uL, 200uL

Observed MW:

53kDa

Calculated MW:

38kDa/44kDa/52kDa

Applications:

WB

Reactivity:

Human, Mouse, Rat

Antibody Information

Recommended dilutions:

WB 1:500 - 1:2000

Source:

Rabbit

Isotype:

IgG

Purification:

Affinity purification

Protein Background

Immunogen information

Gene ID:

10040

Uniprot

O75674

Synonyms:

SRCASM; TOM1L1

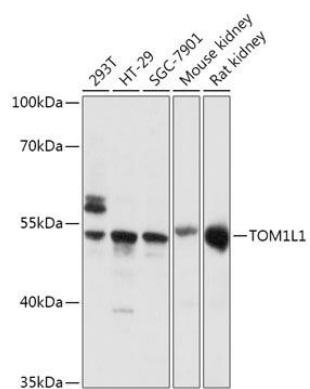
Immunogen:

A synthetic peptide of Human TOM1L1.

Storage:

Store at -20°C. Avoid freeze / thaw cycles. Buffer: PBS with 0.02% sodium azide, 50% glycerol, pH7.3.

Product Images



Western blot - TOM1L1 Polyclonal Antibody (CAB17602)