

AP3S2 Rabbit Polyclonal Antibody



CAB17607

Product Information

Size:

20uL, 50uL, 100uL, 200uL

Observed MW:

22kDa

Calculated MW:

14kDa/22kDa/43kDa

Applications:

WB IF

Reactivity:

Human, Mouse, Rat

Antibody Information

Recommended dilutions:

WB 1:500 - 1:2000 IF 1:50 - 1:200

Source:

Rabbit

Isotype:

IgG

Purification:

Affinity purification

Protein Background

Immunogen information

Gene ID:

10239

Uniprot

P59780

Synonyms:

AP3S2; AP3S3; sigma3b

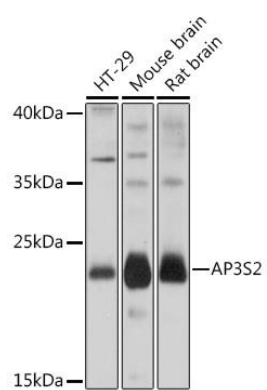
Immunogen:

Recombinant fusion protein containing a sequence corresponding to amino acids 1-193 of human AP3S2 (NP_005820.1).

Storage:

Store at -20°C. Avoid freeze / thaw cycles. Buffer: PBS with 0.02% sodium azide, 50% glycerol, pH7.3.

Product Images



Western blot - AP3S2 Rabbit pAb (CAB17607)