

# UBE4B Rabbit Polyclonal Antibody



CAB17609

## Product Information

### Size:

20uL, 50uL, 100uL, 200uL

### Observed MW:

146kDa

### Calculated MW:

121kDa/133kDa/146kDa/151kDa

### Applications:

WB

### Reactivity:

Human, Mouse

## Protein Background

The modification of proteins with ubiquitin is an important cellular mechanism for targeting abnormal or short-lived proteins for degradation. Ubiquitination involves at least three classes of enzymes: ubiquitin-activating enzymes, or E1s, ubiquitin-conjugating enzymes, or E2s, and ubiquitin-protein ligases, or E3s. This gene encodes an additional conjugation factor, E4, which is involved in multiubiquitin chain assembly. This gene is also the strongest candidate in the neuroblastoma tumor suppressor genes. Alternatively spliced transcript variants encoding distinct isoforms have been found for this gene. [provided by RefSeq, Jul 2008]

## Immunogen information

### Gene ID:

10277

### Uniprot

O95155

### Synonyms:

E4; HDNB1; UBOX3; UFD2; UFD2A; UBE4B

## Antibody Information

### Recommended dilutions:

WB 1:500 - 1:2000

### Source:

Rabbit

### Isotype:

IgG

### Purification:

Affinity purification

### Immunogen:

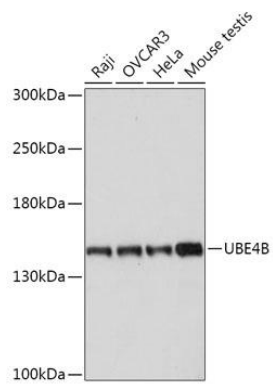
Recombinant fusion protein containing a sequence corresponding to amino acids 130-250 of human UBE4B (NP\_006039.2).

### Storage:

Store at -20°C. Avoid freeze / thaw cycles. Buffer: PBS with 0.02% sodium azide, 50% glycerol, pH7.3.

## Product Images

---



Western blot - UBE4B Polyclonal Antibody (CAB17609)