

ZPBP Rabbit Polyclonal Antibody



CAB17625

Product Information

Size:

20uL, 50uL, 100uL, 200uL

Observed MW:

34kDa

Calculated MW:

Applications:

WB IHC IF

Reactivity:

Human, Mouse, Rat

Protein Background

ZPBP is one of several proteins that are thought to participate in secondary binding between acrosome-reacted sperm and the egg-specific extracellular matrix, the zona pellucida (McLeskey et al., 1998 [PubMed 9378618]).[supplied by OMIM, Aug 2008]

Immunogen information

Gene ID:

11055

Uniprot

Q9BS86

Synonyms:

ZPBP1; ZPBP

Antibody Information

Recommended dilutions:

WB 1:500 - 1:2000 IHC 1:50
- 1:200 IF 1:50 - 1:200

Source:

Rabbit

Isotype:

IgG

Purification:

Affinity purification

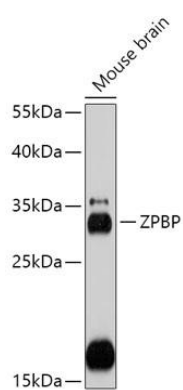
Immunogen:

Recombinant fusion protein containing a sequence corresponding to amino acids 45-200 of human ZPBP (NP_008940.2).

Storage:

Store at -20°C. Avoid freeze / thaw cycles. Buffer: PBS with 0.02% sodium azide, 50% glycerol, pH7.3.

Product Images



Western blot - ZPBP Rabbit pAb (CAB17625)