

FKBP1A Rabbit Polyclonal Antibody



CAB1763

Product Information

Size:

20uL, 50uL, 100uL, 200uL

Observed MW:

12kDa

Calculated MW:

11kDa

Applications:

WB IHC

Reactivity:

Human, Mouse, Rat

Antibody Information

Recommended dilutions:

WB 1:500 - 1:2000 IHC 1:50
- 1:200

Source:

Rabbit

Isotype:

IgG

Purification:

Affinity purification

Protein Background

The protein encoded by this gene is a member of the immunophilin protein family, which play a role in immunoregulation and basic cellular processes involving protein folding and trafficking. The protein is a cis-trans prolyl isomerase that binds the immunosuppressants FK506 and rapamycin. It interacts with several intracellular signal transduction proteins including type I TGF-beta receptor. It also interacts with multiple intracellular calcium release channels, and coordinates multi-protein complex formation of the tetrameric skeletal muscle ryanodine receptor. In mouse, deletion of this homologous gene causes congenital heart disorder known as noncompaction of left ventricular myocardium. Multiple alternatively spliced variants, encoding the same protein, have been identified. The human genome contains five pseudogenes related to this gene, at least one of which is transcribed.

Immunogen information

Gene ID:

2280

Uniprot

P62942

Synonyms:

FKBP1A; FKBP-12; FKBP-1A; FKBP1; FKBP12; PKC12; PKCI2; PPIASE

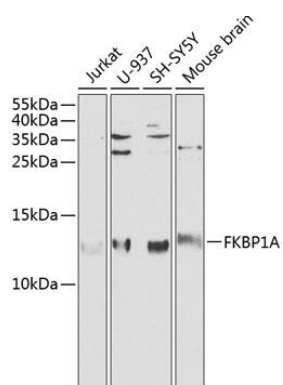
Immunogen:

Recombinant fusion protein containing a sequence corresponding to amino acids 1-108 of human FKBP1A (NP_463460.1).

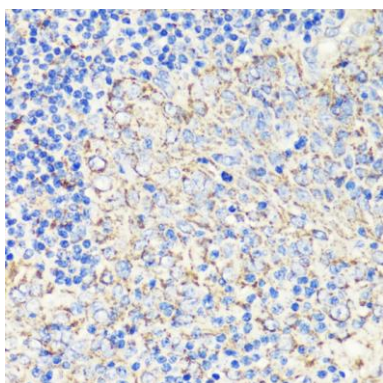
Storage:

Store at -20°C. Avoid freeze / thaw cycles. Buffer: PBS with 0.02% sodium azide, 50% glycerol, pH7.3.

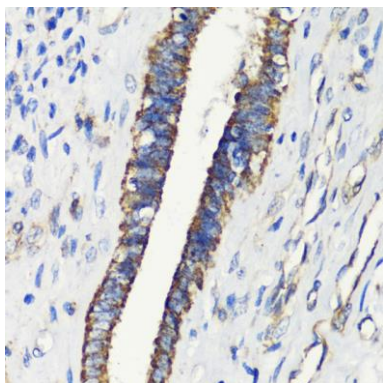
Product Images



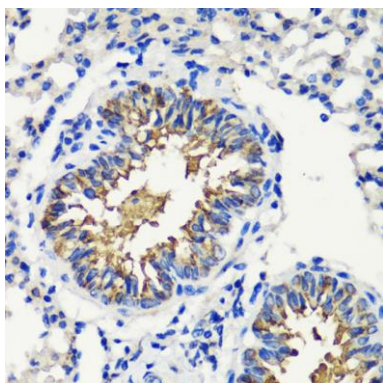
Western blot analysis of extracts of various cell lines, using FKBP1A antibody (CAB1763) at 1:1000 dilution. Secondary antibody: HRP Goat Anti-Rabbit IgG (H+L) (CABS014) at 1:10000 dilution. Lysates/proteins: 25ug per lane. Blocking buffer: 3% nonfat dry milk in TBST.



Immunohistochemistry of paraffin-embedded human tonsil using FKBP1A antibody (CAB1763) at dilution of 1:200 (40x lens).



Immunohistochemistry of paraffin-embedded human uterine cancer using FKBP1A antibody (CAB1763) at dilution of 1:200 (40x lens).



Immunohistochemistry of paraffin-embedded mouse lung using FKBP1A antibody (CAB1763) at dilution of 1:200 (40x lens).