

CLCA4 Rabbit Polyclonal Antibody



CAB17636

Product Information

Size:

20uL, 50uL, 100uL, 200uL

Observed MW:

101kDa

Calculated MW:

25kDa/101kDa

Applications:

WB

Reactivity:

Human, Rat

Protein Background

The protein encoded by this gene belongs to the calcium sensitive chloride conductance protein family. To date, all members of this gene family map to the same site on chromosome 1p31-p22 and share high degrees of homology in size, sequence and predicted structure, but differ significantly in their tissue distributions. Alternative splicing results in multiple transcript variants, only one of which is thought to be protein coding. [provided by RefSeq, Dec 2008]

Immunogen information

Gene ID:

22802

Uniprot

Q14CN2

Synonyms:

CaCC; CaCC2; CLCA4

Antibody Information

Recommended dilutions:

WB 1:500 - 1:2000

Source:

Rabbit

Isotype:

IgG

Purification:

Affinity purification

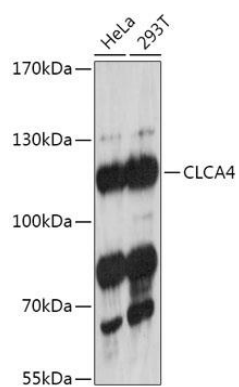
Immunogen:

Recombinant fusion protein containing a sequence corresponding to amino acids 22-150 of human CLCA4 (NP_036260.2).

Storage:

Store at -20°C. Avoid freeze / thaw cycles. Buffer: PBS with 0.02% sodium azide, 50% glycerol, pH7.3.

Product Images



Western blot - CLCA4 Polyclonal Antibody (CAB17636)