

HSPA4L Rabbit Polyclonal Antibody



CAB17637

Product Information

Size:

20uL, 50uL, 100uL, 200uL

Observed MW:

115kDa

Calculated MW:

Applications:

WB IF

Reactivity:

Human, Mouse, Rat

Antibody Information

Recommended dilutions:

WB 1:500 - 1:2000 IF 1:50 - 1:200

Source:

Rabbit

Isotype:

IgG

Purification:

Affinity purification

Protein Background

The protein encoded by this gene is heat shock inducible and may act as a chaperone. The encoded protein can protect the heat-shocked cell against the harmful effects of aggregated proteins. This gene is highly expressed in leukemia cells and may be a good target for therapeutic intervention. Several transcripts encoding different isoforms have been found for this gene. [provided by RefSeq, Dec 2015]

Immunogen information

Gene ID:

22824

Uniprot

O95757

Synonyms:

APG-1; HSPH3; Osp94; HSPA4L

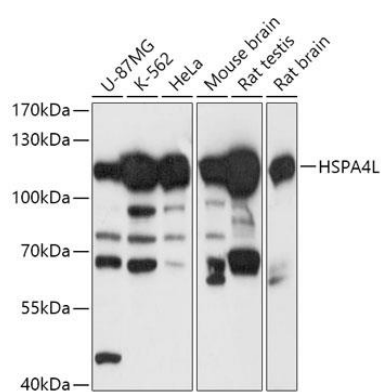
Immunogen:

Recombinant fusion protein containing a sequence corresponding to amino acids 500-600 of human HSPA4L (NP_055093.2).

Storage:

Store at -20°C. Avoid freeze / thaw cycles. Buffer: PBS with 0.02% sodium azide, 50% glycerol, pH7.3.

Product Images



Western blot - HSPA4L Polyclonal Antibody (CAB17637)