

# MLXIP Rabbit Polyclonal Antibody



CAB17639

## Product Information

### Size:

20uL, 50uL, 100uL, 200uL

### Observed MW:

91kDa

### Calculated MW:

### Applications:

WB

### Reactivity:

Human, Rat

## Antibody Information

### Recommended dilutions:

WB 1:500 - 1:2000

### Source:

Rabbit

### Isotype:

IgG

### Purification:

Affinity purification

## Protein Background

This gene encodes a protein that functions as part of a heterodimer to activate transcription. The encoded protein forms a heterodimer with Max-like protein X (MLX) and is involved in the regulation of genes in response to cellular glucose levels. [provided by RefSeq, Mar 2014]

## Immunogen information

### Gene ID:

22877

### Uniprot

Q9HAP2

### Synonyms:

MIR; MONDOA; bHLHe36; MLXIP

### Immunogen:

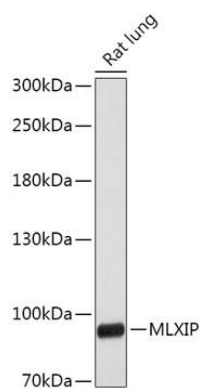
A synthetic peptide corresponding to a sequence within amino acids 50-150 of human MLXIP (NP\_055753.3).

### Storage:

Store at -20°C. Avoid freeze / thaw cycles. Buffer: PBS with 0.02% sodium azide, 50% glycerol, pH7.3.

## Product Images

---



Western blot - MLXIP Polyclonal Antibody (CAB17639)