

# IL16 Rabbit Polyclonal Antibody



CAB1764

## Product Information

### Size:

20uL, 50uL, 100uL, 200uL

### Observed MW:

142kDa

### Calculated MW:

59kDa/66kDa/141kDa

### Applications:

WB IF

### Reactivity:

Human, Mouse

## Antibody Information

### Recommended dilutions:

WB 1:500 - 1:2000 IF 1:50 - 1:200

### Source:

Rabbit

### Isotype:

IgG

### Purification:

Affinity purification

## Protein Background

The protein encoded by this gene is a pleiotropic cytokine that functions as a chemoattractant, a modulator of T cell activation, and an inhibitor of HIV replication. The signaling process of this cytokine is mediated by CD4. The product of this gene undergoes proteolytic processing, which is found to yield two functional proteins. The cytokine function is exclusively attributed to the secreted C-terminal peptide, while the N-terminal product may play a role in cell cycle control. Caspase 3 is reported to be involved in the proteolytic processing of this protein. Alternate splicing results in multiple transcript variants.

## Immunogen information

### Gene ID:

3603

### Uniprot

Q14005

### Synonyms:

IL16; LCF; NIL16; PRIL16; prIL-16

### Immunogen:

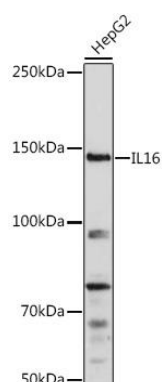
Recombinant fusion protein containing a sequence corresponding to amino acids 1-305 of human IL16 (NP\_757366.2).

### Storage:

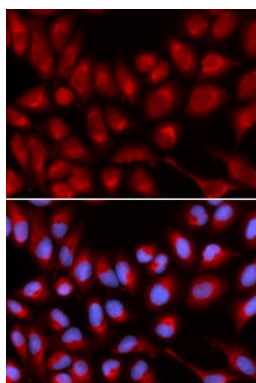
Store at -20°C. Avoid freeze / thaw cycles. Buffer: PBS with 0.02% sodium azide, 50% glycerol, pH7.3.

## Product Images

---



Western blot analysis of extracts of HepG2 cells, using IL16 Rabbit pAb (CAB1764) at 1:1000 dilution. Secondary antibody: HRP Goat Anti-Rabbit IgG (H+L) (CABS014) at 1:10000 dilution. Lysates/proteins: 25ug per lane. Blocking buffer: 3% nonfat dry milk in TBST. Detection: ECL Basic Kit (CABM00020). Exposure time: 90s.



Immunofluorescence analysis of U2OS cells using IL16 antibody (CAB1764). Blue: DAPI for nuclear staining.