

# MON1B Rabbit Polyclonal Antibody



CAB17640

---

## Product Information

### Size:

20uL, 50uL, 100uL, 200uL

### Observed MW:

59kDa

### Calculated MW:

59kDa

### Applications:

WB

### Reactivity:

Human, Rat

## Antibody Information

### Recommended dilutions:

WB 1:500 - 1:2000

### Source:

Rabbit

### Isotype:

IgG

### Purification:

Affinity purification

## Protein Background

### Immunogen information

#### Gene ID:

22879

#### Uniprot

Q7L1V2

#### Synonyms:

HSRG1; SAND2; SRG1; MON1B

#### Immunogen:

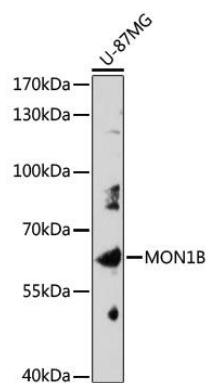
Recombinant fusion protein containing a sequence corresponding to amino acids 481-547 of human MON1B (NP\_055755.1).

#### Storage:

Store at -20°C. Avoid freeze / thaw cycles. Buffer: PBS with 0.02% sodium azide, 50% glycerol, pH7.3.

## Product Images

---



Western blot - MON1B Polyclonal Antibody (CAB17640)