

RTF1 Rabbit Polyclonal Antibody



CAB17657

Product Information

Size:

20uL, 50uL, 100uL, 200uL

Observed MW:

100kDa

Calculated MW:

80kDa

Applications:

WB

Reactivity:

Human, Mouse

Protein Background

This locus may represent a gene involved in regulation of transcription elongation and chromatin remodeling, based on studies of similar proteins in other organisms. The encoded protein may bind single-stranded DNA. [provided by RefSeq, Sep 2010]

Immunogen information

Gene ID:

23168

Uniprot

Q92541

Synonyms:

GTL7; KIAA0252; RTF1

Antibody Information

Recommended dilutions:

WB 1:500 - 1:2000

Source:

Rabbit

Isotype:

IgG

Purification:

Affinity purification

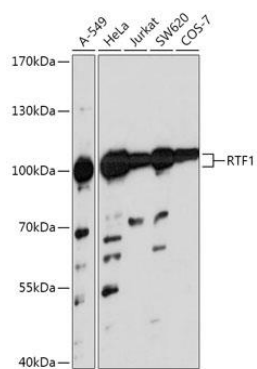
Immunogen:

A synthetic peptide corresponding to a sequence within amino acids 300-400 of human RTF1 (NP_055953.3).

Storage:

Store at -20°C. Avoid freeze / thaw cycles. Buffer: PBS with 0.02% sodium azide, 50% glycerol, pH7.3.

Product Images



Western blot - RTF1 Polyclonal Antibody (CAB17657)