

# CAPN7 Rabbit Polyclonal Antibody



CAB17666

## Product Information

### Size:

20uL, 50uL, 100uL, 200uL

### Observed MW:

93kDa

### Calculated MW:

92kDa

### Applications:

WB IF

### Reactivity:

Human, Mouse, Rat

## Antibody Information

### Recommended dilutions:

WB 1:500 - 1:2000 IF 1:50 - 1:200

### Source:

Rabbit

### Isotype:

IgG

### Purification:

Affinity purification

## Protein Background

Calpains are ubiquitous, well-conserved family of calcium-dependent, cysteine proteases. The calpain proteins are heterodimers consisting of an invariant small subunit and variable large subunits. The large subunit possesses a cysteine protease domain, and both subunits possess calcium-binding domains. Calpains have been implicated in neurodegenerative processes, as their activation can be triggered by calcium influx and oxidative stress. The function of the protein encoded by this gene is not known. An orthologue has been found in mouse but it seems to diverge from other family members. The mouse orthologue is thought to be calcium independent with protease activity. [provided by RefSeq, Jul 2008]

## Immunogen information

### Gene ID:

23473

### Uniprot

Q9Y6W3

### Synonyms:

CALPAIN7; PALBH; CAPN7; calpain-7

### Immunogen:

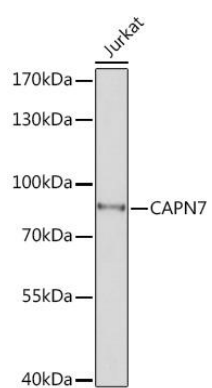
Recombinant fusion protein containing a sequence corresponding to amino acids 20-220 of human CAPN7 (NP\_055111.1).

### Storage:

Store at -20°C. Avoid freeze / thaw cycles. Buffer: PBS with 0.02% sodium azide, 50% glycerol, pH7.3.

## Product Images

---



Western blot - CAPN7 Rabbit pAb (CAB17666)