

# CHST5 Rabbit Polyclonal Antibody



CAB17667

## Product Information

### Size:

20uL, 50uL, 100uL, 200uL

### Observed MW:

46kDa

### Calculated MW:

### Applications:

WB

### Reactivity:

Human

## Antibody Information

### Recommended dilutions:

WB 1:500 - 1:2000

### Source:

Rabbit

### Isotype:

IgG

### Purification:

Affinity purification

## Protein Background

The protein encoded by this gene belongs to the Gal/GalNAc/GlcNAc 6-O-sulfotransferase (GST) family, members of which catalyze the transfer of sulfate to position 6 of galactose (Gal), N-acetylgalactosamine (GalNAc), or N-acetylglucosamine (GlcNAc) residues within proteoglycans, and sulfation of O-linked sugars of mucin-type acceptors. Carbohydrate sulfation plays a critical role in many biologic processes. This gene is predominantly expressed in colon and small intestine. [provided by RefSeq, Aug 2011]

## Immunogen information

### Gene ID:

23563

### Uniprot

Q9GZS9

### Synonyms:

I-GlcNAc-6-ST; I-GlcNAc6ST; glcNAc6ST-3; gn6st-3; hIGn6ST; CHST5

### Immunogen:

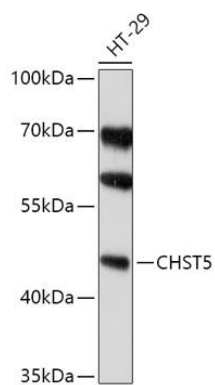
Recombinant fusion protein containing a sequence corresponding to amino acids 232-411 of human CHST5 (NP\_078809.2).

### Storage:

Store at -20°C. Avoid freeze / thaw cycles. Buffer: PBS with 0.02% sodium azide, 50% glycerol, pH7.3.

## Product Images

---



Western blot - CHST5 Polyclonal Antibody (CAB17667)