

# FLRT2 Rabbit Polyclonal Antibody



CAB17668

## Product Information

### Size:

20uL, 50uL, 100uL, 200uL

### Observed MW:

80kDa

### Calculated MW:

## Protein Background

This gene encodes a member of the fibronectin leucine rich transmembrane (FLRT) family of cell adhesion molecules, which regulate early embryonic vascular and neural development. The encoded type I transmembrane protein has an extracellular region consisting of an N-terminal leucine-rich repeat domain and a type 3 fibronectin domain, followed by a transmembrane domain and a short C-terminal cytoplasmic tail domain. It functions as both a homophilic cell adhesion molecule and a heterophilic chemorepellent through its interaction with members of the uncoordinated-5 receptor family. Proteolytic removal of the extracellular region controls the migration of neurons in the developing cortex. Alternative splicing results in multiple transcript variants. [provided by RefSeq, Sep 2016]

## Applications:

WB

## Reactivity:

Mouse

## Immunogen information

### Gene ID:

23768

### Uniprot

O43155

## Antibody Information

### Recommended dilutions:

WB 1:500 - 1:2000

### Source:

Rabbit

### Synonyms:

FLRT2

### Immunogen:

A synthetic peptide of Human FLRT2.

### Isotype:

IgG

### Storage:

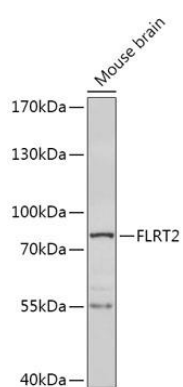
Store at -20°C. Avoid freeze / thaw cycles. Buffer: PBS with 0.02% sodium azide, 50% glycerol, pH7.3.

### Purification:

Affinity purification

## Product Images

---



Western blot - FLRT2 Polyclonal Antibody (CAB17668)