

# PRKD2 Rabbit Polyclonal Antibody



CAB17670

---

## Product Information

### Size:

20uL, 50uL, 100uL, 200uL

### Observed MW:

110kDa

### Calculated MW:

80kDa/96kDa

### Applications:

WB

### Reactivity:

Human, Mouse, Rat

## Protein Background

The protein encoded by this gene belongs to the protein kinase D (PKD) family of serine/threonine protein kinases. This kinase can be activated by phorbol esters as well as by gastrin via the cholecystokinin B receptor (CCKBR) in gastric cancer cells. It can bind to diacylglycerol (DAG) in the trans-Golgi network (TGN) and may regulate basolateral membrane protein exit from TGN. Alternative splicing results in multiple transcript variants encoding different isoforms. [provided by RefSeq, Jul 2008]

## Immunogen information

### Gene ID:

25865

### Uniprot

Q9BZL6

### Synonyms:

HSPC187; PKD2; nPKC-D2; PRKD2

## Antibody Information

### Recommended dilutions:

WB 1:500 - 1:2000

### Source:

Rabbit

### Isotype:

IgG

### Purification:

Affinity purification

### Immunogen:

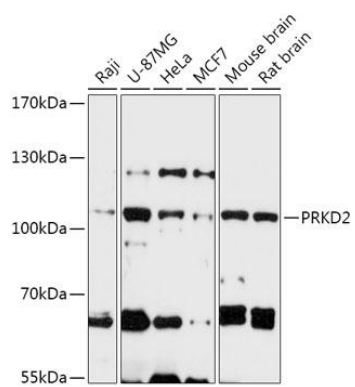
A synthetic peptide of Human PRKD2.

### Storage:

Store at -20°C. Avoid freeze / thaw cycles. Buffer: PBS with 0.02% sodium azide, 50% glycerol, pH7.3.

## Product Images

---



Western blot - PRKD2 Polyclonal Antibody (CAB17670)