

SUMF2 Rabbit Polyclonal Antibody



CAB17671

Product Information

Size:

20uL, 50uL, 100uL, 200uL

Observed MW:

34kDa

Calculated MW:

Protein Background

The catalytic sites of sulfatases are only active if they contain a unique amino acid, C-alpha-formylglycine (FGly). The FGly residue is posttranslationally generated from a cysteine by enzymes with FGly-generating activity. The gene described in this record is a member of the sulfatase-modifying factor family and encodes a protein with a DUF323 domain that localizes to the lumen of the endoplasmic reticulum. This protein has low levels of FGly-generating activity but can heterodimerize with another family member - a protein with high levels of FGly-generating activity. Alternate transcriptional splice variants, encoding different isoforms, have been characterized. [provided by RefSeq, Jul 2008]

Immunogen information

Applications:

WB IF

Reactivity:

Human, Mouse, Rat

Gene ID:

25870

Uniprot

Q8NBJ7

Synonyms:

pFGE; SUMF2

Antibody Information

Recommended dilutions:

WB 1:500 - 1:2000 IF 1:50 - 1:100

Source:

Rabbit

Immunogen:

Recombinant fusion protein containing a sequence corresponding to amino acids 45-320 of human SUMF2 (NP_056226.2).

Isotype:

IgG

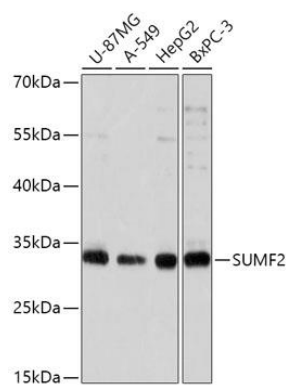
Storage:

Store at -20°C. Avoid freeze / thaw cycles. Buffer: PBS with 0.02% sodium azide, 50% glycerol, pH7.3.

Purification:

Affinity purification

Product Images



Western blot - SUMF2 Polyclonal Antibody (CAB17671)