

ARHGEF26 Rabbit Polyclonal Antibody



CAB17677

Product Information

Size:

20uL, 50uL, 100uL, 200uL

Observed MW:

102kDa

Calculated MW:

48kDa/88kDa/97kDa

Applications:

WB IHC IF

Reactivity:

Human, Mouse, Rat

Protein Background

This gene encodes a member of the Rho-guanine nucleotide exchange factor (Rho-GEF) family. These proteins regulate Rho GTPases by catalyzing the exchange of GDP for GTP. The encoded protein specifically activates RhoG and plays a role in the promotion of macropinocytosis. Underexpression of the encoded protein may be a predictive marker of chemoresistant disease. Alternatively spliced transcript variants encoding multiple isoforms have been observed for this gene. [provided by RefSeq, Oct 2011]

Immunogen information

Gene ID:

26084

Uniprot

Q96DR7

Synonyms:

ARHGEF26; CSGEF; HMFN1864; SGEF

Antibody Information

Recommended dilutions:

WB 1:500 - 1:2000 IHC 1:50
- 1:100 IF 1:50 - 1:100

Source:

Rabbit

Isotype:

IgG

Purification:

Affinity purification

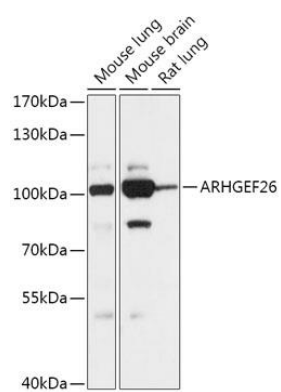
Immunogen:

Recombinant fusion protein containing a sequence corresponding to amino acids 592-871 of human ARHGEF26 (NP_056410.3).

Storage:

Store at -20°C. Avoid freeze / thaw cycles. Buffer: PBS with 0.02% sodium azide, 50% glycerol, pH7.3.

Product Images



Western blot - ARHGEF26 Polyclonal Antibody (CAB17677)