

# ABCA12 Rabbit Polyclonal Antibody



CAB17680

## Product Information

### Size:

20uL, 50uL, 100uL, 200uL

### Observed MW:

Refer to figures

### Calculated MW:

### Applications:

IF

### Reactivity:

Mouse

## Antibody Information

### Recommended dilutions:

IF 1:50 - 1:200

### Source:

Rabbit

### Isotype:

IgG

### Purification:

Affinity purification

## Protein Background

The membrane-associated protein encoded by this gene is a member of the superfamily of ATP-binding cassette (ABC) transporters. ABC proteins transport various molecules across extra- and intracellular membranes. ABC genes are divided into seven distinct subfamilies (ABC1, MDR/TAP, MRP, ALD, OABP, GCN20, and White). This encoded protein is a member of the ABC1 subfamily, which is the only major ABC subfamily found exclusively in multicellular eukaryotes. Alternative splicing of this gene results in multiple transcript variants. [provided by RefSeq, Jul 2008]

## Immunogen information

### Gene ID:

26154

### Uniprot

Q86UK0

### Synonyms:

ARCI4A; ARCI4B; ICR2B; LI2; ABCA12

### Immunogen:

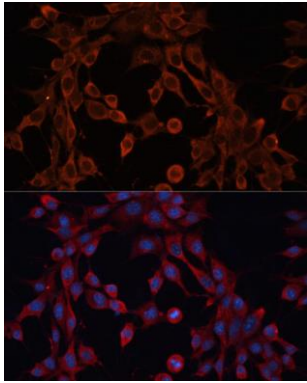
Recombinant fusion protein containing a sequence corresponding to amino acids 2456-2595 of human ABCA12 (NP\_775099.2).

### Storage:

Store at -20°C. Avoid freeze / thaw cycles. Buffer: PBS with 0.02% sodium azide, 50% glycerol, pH7.3.

## Product Images

---



Immunofluorescence - ABCA12 Rabbit pAb (CAB17680)