

STEAP1 Rabbit Polyclonal Antibody



CAB17684

Product Information

Size:

20uL, 50uL, 100uL, 200uL

Observed MW:

40kDa

Calculated MW:

Applications:

WB

Reactivity:

Human, Mouse, Rat

Protein Background

This gene is predominantly expressed in prostate tissue, and is found to be upregulated in multiple cancer cell lines. The gene product is predicted to be a six-transmembrane protein, and was shown to be a cell surface antigen significantly expressed at cell-cell junctions. [provided by RefSeq, Jul 2008]

Immunogen information

Gene ID:

26872

Uniprot

Q9UHE8

Synonyms:

PRSS24; STEAP; STEAP1

Antibody Information

Recommended dilutions:

WB 1:500 - 1:2000

Source:

Rabbit

Isotype:

IgG

Purification:

Affinity purification

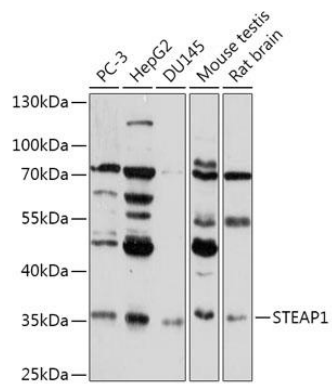
Immunogen:

Recombinant fusion protein containing a sequence corresponding to amino acids 1-80 of human STEAP1 (NP_036581.1).

Storage:

Store at -20°C. Avoid freeze / thaw cycles. Buffer: PBS with 0.02% sodium azide, 50% glycerol, pH7.3.

Product Images



Western blot - STEAP1 Polyclonal Antibody (CAB17684)