

IFNAR2 Rabbit Polyclonal Antibody



CAB1769

Product Information

Size:

20uL, 50uL, 100uL, 200uL

Observed MW:

58kDa

Calculated MW:

27kDa/37kDa/57kDa

Applications:

WB IHC IF

Reactivity:

Human, Mouse, Rat

Antibody Information

Recommended dilutions:

WB 1:500 - 1:2000 IHC 1:50
- 1:100 IF 1:50 - 1:100

Source:

Rabbit

Isotype:

IgG

Purification:

Affinity purification

Protein Background

The protein encoded by this gene is a type I membrane protein that forms one of the two chains of a receptor for interferons alpha and beta. Binding and activation of the receptor stimulates Janus protein kinases, which in turn phosphorylate several proteins, including STAT1 and STAT2. Multiple transcript variants encoding at least two different isoforms have been found for this gene.

Immunogen information

Gene ID:

3455

Uniprot

P48551

Synonyms:

IFNAR2; IFN-R; IFN-alpha-REC; IFNABR; IFNARB; IMD45

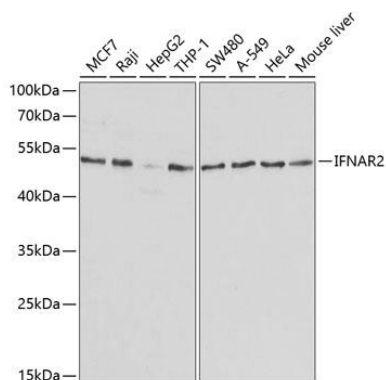
Immunogen:

Recombinant fusion protein containing a sequence corresponding to amino acids 27-243 of human IFNAR2 (NP_997467.1).

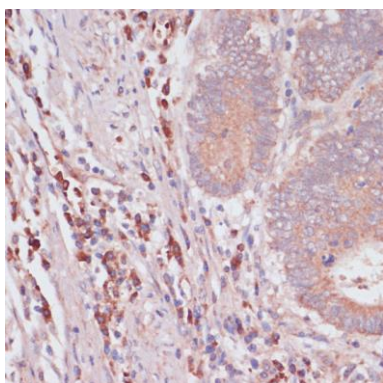
Storage:

Store at -20°C. Avoid freeze / thaw cycles. Buffer: PBS with 0.02% sodium azide, 50% glycerol, pH7.3.

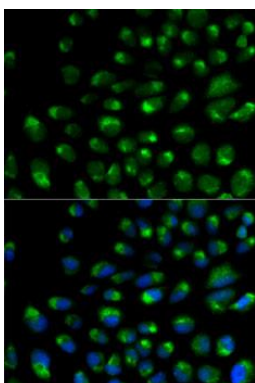
Product Images



Western blot analysis of extracts of various cell lines, using IFNAR2 antibody (CAB1769) at 1:1000 dilution. Secondary antibody: HRP Goat Anti-Rabbit IgG (H+L) (CABS014) at 1:10000 dilution. Lysates/proteins: 25ug per lane. Blocking buffer: 3% nonfat dry milk in TBST.



Immunohistochemistry of paraffin-embedded human colon carcinoma using IFNAR2 antibody (CAB1769) at dilution of 1:100 (40x lens).



Immunofluorescence analysis of U2OS cells using IFNAR2 antibody (CAB1769). Blue: DAPI for nuclear staining.