

LGALS13 Rabbit Polyclonal Antibody



CAB17691

Product Information

Size:

20uL, 50uL, 100uL, 200uL

Observed MW:

16kDa

Calculated MW:

16kDa

Applications:

WB

Reactivity:

Human, Mouse, Rat

Protein Background

Lysophospholipases are enzymes that act on biological membranes to regulate the multifunctional lysophospholipids. The protein encoded by this gene has lysophospholipase activity. It is composed of two identical subunits which are held together by disulfide bonds. This protein has structural similarity to several members of the beta-galactoside-binding S-type lectin family. [provided by RefSeq, Jul 2008]

Immunogen information

Gene ID:

29124

Uniprot

Q9UHV8

Synonyms:

GAL13; PLAC8; PP13; LGALS13

Antibody Information

Recommended dilutions:

WB 1:500 - 1:2000

Source:

Rabbit

Isotype:

IgG

Purification:

Affinity purification

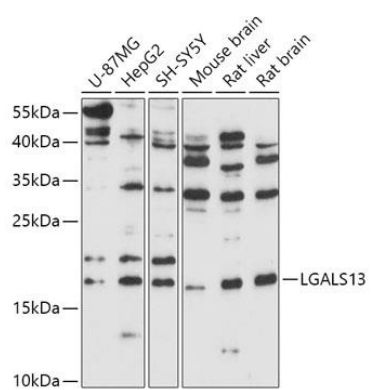
Immunogen:

Recombinant fusion protein containing a sequence corresponding to amino acids 30-139 of human LGALS13 (NP_037400.1).

Storage:

Store at -20°C. Avoid freeze / thaw cycles. Buffer: PBS with 0.02% sodium azide, 50% glycerol, pH7.3.

Product Images



Western blot - LGALS13 Polyclonal Antibody (CAB17691)