

# DCDC2 Rabbit Polyclonal Antibody



CAB17704

## Product Information

### Size:

20uL, 50uL, 100uL, 200uL

### Observed MW:

53kDa

### Calculated MW:

### Applications:

WB

### Reactivity:

Human, Mouse, Rat

## Antibody Information

### Recommended dilutions:

WB 1:500 - 1:2000

### Source:

Rabbit

### Isotype:

IgG

### Purification:

Affinity purification

## Protein Background

This gene encodes a doublecortin domain-containing family member. The doublecortin domain has been demonstrated to bind tubulin and enhance microtubule polymerization. This family member is thought to function in neuronal migration where it may affect the signaling of primary cilia. Mutations in this gene have been associated with reading disability (RD) type 2, also referred to as developmental dyslexia. Alternatively spliced transcript variants encoding the same protein have been found for this gene. [provided by RefSeq, Jan 2013]

## Immunogen information

### Gene ID:

51473

### Uniprot

Q9UHG0

### Synonyms:

DCDC2A; DFNB66; NPHP19; RU2; RU2S; DCDC2

### Immunogen:

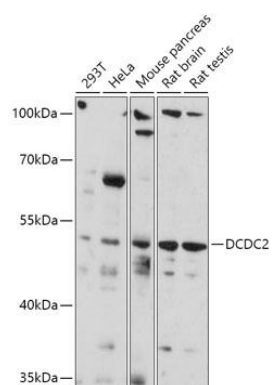
Recombinant fusion protein containing a sequence corresponding to amino acids 1-250 of human DCDC2 (NP\_001182539).

### Storage:

Store at -20°C. Avoid freeze / thaw cycles. Buffer: PBS with 0.02% sodium azide, 50% glycerol, pH7.3.

## Product Images

---



Western blot - DCDC2 Polyclonal Antibody (CAB17704)