

PPHLN1 Rabbit Polyclonal Antibody



CAB17706

Product Information

Size:

20uL, 50uL, 100uL, 200uL

Observed MW:

53kDa

Calculated MW:

Applications:

WB

Reactivity:

Human, Mouse, Rat

Antibody Information

Recommended dilutions:

WB 1:500 - 1:2000

Source:

Rabbit

Isotype:

IgG

Purification:

Affinity purification

Protein Background

The protein encoded by this gene is one of the several proteins that become sequentially incorporated into the cornified cell envelope during the terminal differentiation of keratinocyte at the outer layers of epidermis. This protein interacts with periplakin, which is known as a precursor of the cornified cell envelope. The cellular localization pattern and insolubility of this protein suggest that it may play a role in epithelial differentiation and contribute to epidermal integrity and barrier formation. Multiple alternatively spliced transcript variants encoding distinct isoforms have been observed. [provided by RefSeq, Jul 2008]

Immunogen information

Gene ID:

51535

Uniprot

Q8NEY8

Synonyms:

CR; HSPC206; HSPC232; PPHLN1

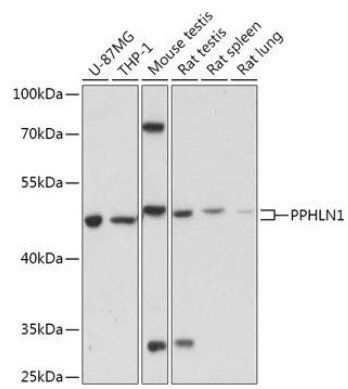
Immunogen:

Recombinant fusion protein containing a sequence corresponding to amino acids 195-255 of human PPHLN1 (NP_958846.1).

Storage:

Store at -20°C. Avoid freeze / thaw cycles. Buffer: PBS with 0.02% sodium azide, 50% glycerol, pH7.3.

Product Images



Western blot - PPHLN1 Polyclonal Antibody (CAB17706)