

# TOMM7 Rabbit Polyclonal Antibody



CAB17711

---

## Product Information

### Size:

20uL, 50uL, 100uL, 200uL

### Observed MW:

6kDa

### Calculated MW:

### Applications:

WB

### Reactivity:

Mouse

## Antibody Information

### Recommended dilutions:

WB 1:500 - 1:2000

### Source:

Rabbit

### Isotype:

IgG

### Purification:

Affinity purification

## Protein Background

This gene encodes a subunit of the translocase of the outer mitochondrial membrane. The encoded protein regulates the assembly and stability of the translocase complex. [provided by RefSeq, Oct 2012]

## Immunogen information

### Gene ID:

54543

### Uniprot

Q9P0U1

### Synonyms:

TOM7; TOMM7

### Immunogen:

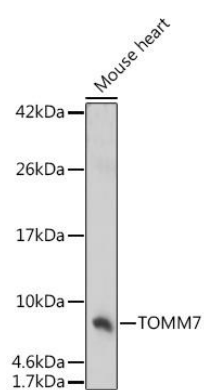
A synthetic peptide corresponding to a sequence within amino acids 1-55 of human TOMM7 (NP\_061932.1).

### Storage:

Store at -20°C. Avoid freeze / thaw cycles. Buffer: PBS with 0.02% sodium azide, 50% glycerol, pH7.3.

## Product Images

---



Western blot - TOMM7 Polyclonal Antibody (CAB17711)