

ELOVL2 Rabbit Polyclonal Antibody



CAB17712

Product Information

Size:

20uL, 50uL, 100uL, 200uL

Observed MW:

38kDa

Calculated MW:

Applications:

WB

Reactivity:

Human, Rat

Antibody Information

Recommended dilutions:

WB 1:500 - 1:2000

Source:

Rabbit

Isotype:

IgG

Purification:

Affinity purification

Protein Background

Immunogen information

Gene ID:

54898

Uniprot

Q9NXB9

Synonyms:

SSC2; ELOVL2

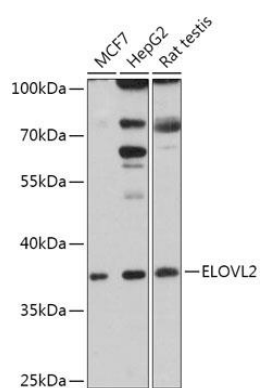
Immunogen:

Recombinant fusion protein containing a sequence corresponding to amino acids 247-296 of human ELOVL2 (NP_060240.3).

Storage:

Store at -20°C. Avoid freeze / thaw cycles. Buffer: PBS with 0.02% sodium azide, 50% glycerol, pH7.3.

Product Images



Western blot - ELOVL2 Polyclonal Antibody (CAB17712)