

MTPAP Rabbit Polyclonal Antibody



CAB17715

Product Information

Size:

20uL, 50uL, 100uL, 200uL

Observed MW:

60kDa

Calculated MW:

Applications:

WB

Reactivity:

Human, Mouse

Protein Background

The protein encoded by this gene is a member of the DNA polymerase type-B-like family. This enzyme synthesizes the 3' poly(A) tail of mitochondrial transcripts and plays a role in replication-dependent histone mRNA degradation.[provided by RefSeq, Jan 2011]

Immunogen information

Gene ID:

55149

Uniprot

Q9NVV4

Synonyms:

PAPD1; SPAX4; MTPAP

Antibody Information

Recommended dilutions:

WB 1:500 - 1:2000

Source:

Rabbit

Isotype:

IgG

Purification:

Affinity purification

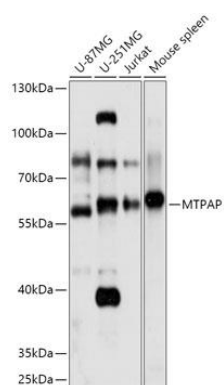
Immunogen:

Recombinant fusion protein containing a sequence corresponding to amino acids 383-582 of human MTPAP (NP_060579.3).

Storage:

Store at -20°C. Avoid freeze / thaw cycles. Buffer: PBS with 0.02% sodium azide, 50% glycerol, pH7.3.

Product Images



Western blot - MTPAP Polyclonal Antibody (CAB17715)