

# ARHGEF10L Rabbit Polyclonal Antibody



CAB17716

---

## Product Information

### Size:

20uL, 50uL, 100uL, 200uL

### Observed MW:

140kDa

### Calculated MW:

### Applications:

WB

### Reactivity:

Human, Rat

## Protein Background

This gene belongs to the RhoGEF subfamily of RhoGTPases. Members of this subfamily are activated by specific guanine nucleotide exchange factors (GEFs) and are involved in signal transduction. The encoded protein shows cytosolic distribution. Alternative splicing results in multiple transcript variants. [provided by RefSeq, Jun 2016]

## Immunogen information

### Gene ID:

55160

### Uniprot

Q9HCE6

### Synonyms:

GrinchGEF; ARHGEF10L

## Antibody Information

### Recommended dilutions:

WB 1:500 - 1:2000

### Source:

Rabbit

### Isotype:

IgG

### Purification:

Affinity purification

### Immunogen:

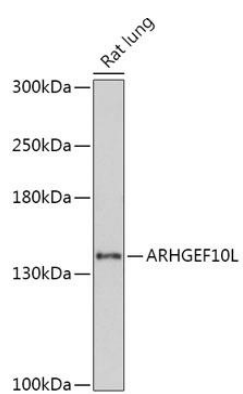
Recombinant fusion protein containing a sequence corresponding to amino acids 1120-1230 of human ARHGEF10L (NP\_001011722).

### Storage:

Store at -20°C. Avoid freeze / thaw cycles. Buffer: PBS with 0.02% sodium azide, 50% glycerol, pH7.3.

## Product Images

---



Western blot - ARHGEF10L Polyclonal Antibody (CAB17716)