

KLHL11 Rabbit Polyclonal Antibody



CAB17717

Product Information

Size:

20uL, 50uL, 100uL, 200uL

Observed MW:

80kDa

Calculated MW:

Applications:

WB

Reactivity:

Mouse, Rat

Antibody Information

Recommended dilutions:

WB 1:500 - 1:2000

Source:

Rabbit

Isotype:

IgG

Purification:

Affinity purification

Protein Background

Immunogen information

Gene ID:

55175

Uniprot

Q9NVR0

Synonyms:

KLHL11

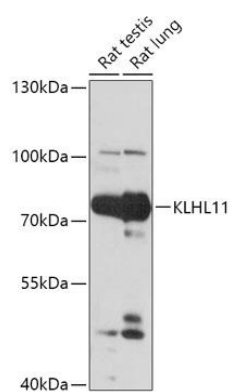
Immunogen:

Recombinant fusion protein containing a sequence corresponding to amino acids 16-300 of human KLHL11 (NP_060613.1).

Storage:

Store at -20°C. Avoid freeze / thaw cycles. Buffer: PBS with 0.02% sodium azide, 50% glycerol, pH7.3.

Product Images



Western blot - KLHL11 Polyclonal Antibody (CAB17717)