

GPRC5D Rabbit Polyclonal Antibody



CAB17722

Product Information

Size:

20uL, 50uL, 100uL, 200uL

Observed MW:

49kDa

Calculated MW:

Applications:

WB

Reactivity:

Human, Rat

Protein Background

The protein encoded by this gene is a member of the G protein-coupled receptor family; however, the specific function of this gene has not yet been determined. [provided by RefSeq, Jul 2008]

Immunogen information

Gene ID:

55507

Uniprot

Q9NZD1

Synonyms:

GPRC5D

Antibody Information

Recommended dilutions:

WB 1:500 - 1:2000

Source:

Rabbit

Isotype:

IgG

Purification:

Affinity purification

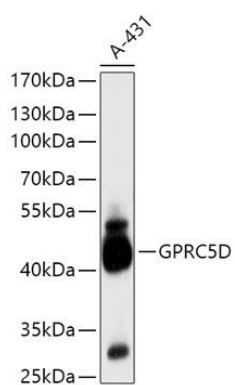
Immunogen:

Recombinant fusion protein containing a sequence corresponding to amino acids 264-345 of human GPRC5D (NP_061124.1).

Storage:

Store at -20°C. Avoid freeze / thaw cycles. Buffer: PBS with 0.02% sodium azide, 50% glycerol, pH7.3.

Product Images



Western blot - GPRC5D Polyclonal Antibody (CAB17722)