

MTMR8 Rabbit Polyclonal Antibody



CAB17723

Product Information

Size:

20uL, 50uL, 100uL, 200uL

Observed MW:

79kDa

Calculated MW:

66kDa/78kDa

Applications:

WB IHC

Reactivity:

Human, Mouse, Rat

Protein Background

This gene encodes a member of the myotubularin-related family and is part of the MTMR6 subgroup. Family members are dual-specificity phosphatases and the encoded protein contains a phosphoinositide-binding domain (PID) and a SET-interacting domain (SID). Defects in other family members have been found in myotubular myopathic diseases. [provided by RefSeq, Mar 2010]

Immunogen information

Gene ID:

55613

Uniprot

Q96EF0

Synonyms:

MTMR8

Antibody Information

Recommended dilutions:

WB 1:500 - 1:2000 IHC 1:50 - 1:200

Source:

Rabbit

Isotype:

IgG

Purification:

Affinity purification

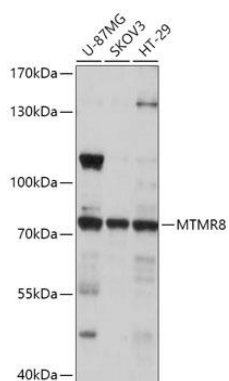
Immunogen:

Recombinant fusion protein containing a sequence corresponding to amino acids 430-560 of human MTMR8 (NP_060147.2).

Storage:

Store at -20°C. Avoid freeze / thaw cycles. Buffer: PBS with 0.02% sodium azide, 50% glycerol, pH7.3.

Product Images



Western blot - MTMR8 Rabbit pAb (CAB17723)