

RAB20 Rabbit Polyclonal Antibody



CAB17725

Product Information

Size:

20uL, 50uL, 100uL, 200uL

Observed MW:

26kDa

Calculated MW:

26kDa

Applications:

WB IF

Reactivity:

Mouse

Antibody Information

Recommended dilutions:

WB 1:500 - 1:2000 IF 1:50 - 1:200

Source:

Rabbit

Isotype:

IgG

Purification:

Affinity purification

Protein Background

Immunogen information

Gene ID:

55647

Uniprot

Q9NX57

Synonyms:

RAB20

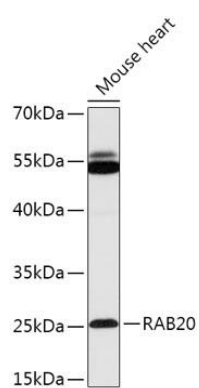
Immunogen:

Recombinant fusion protein containing a sequence corresponding to amino acids 80-190 of human RAB20 (NP_060287.1).

Storage:

Store at -20°C. Avoid freeze / thaw cycles. Buffer: PBS with 0.02% sodium azide, 50% glycerol, pH7.3.

Product Images



Western blot - RAB20 Rabbit pAb (CAB17725)