

DDX28 Rabbit Polyclonal Antibody



CAB17728

Product Information

Size:

20uL, 50uL, 100uL, 200uL

Observed MW:

60kDa

Calculated MW:

59kDa

Applications:

WB

Reactivity:

Human, Mouse, Rat

Antibody Information

Recommended dilutions:

WB 1:500 - 1:2000

Source:

Rabbit

Isotype:

IgG

Purification:

Affinity purification

Protein Background

DEAD box proteins, characterized by the conserved motif Asp-Glu-Ala-Asp (DEAD), are putative RNA helicases. They are implicated in a number of cellular processes involving alteration of RNA secondary structure, such as translation initiation, nuclear and mitochondrial splicing, and ribosome and spliceosome assembly. Based on their distribution patterns, some members of the DEAD box protein family are believed to be involved in embryogenesis, spermatogenesis, and cellular growth and division. This gene is intronless. It encodes an RNA-dependent ATPase. The encoded protein is localized in the mitochondria and the nucleus, and can be transported between the mitochondria and the nucleus. [provided by RefSeq, Jul 2008]

Immunogen information

Gene ID:

55794

Uniprot

Q9NUL7

Synonyms:

DDX28; MDDX28

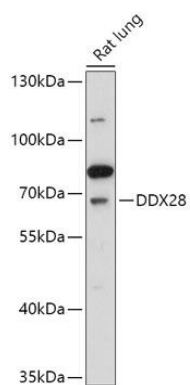
Immunogen:

Recombinant fusion protein containing a sequence corresponding to amino acids 371-540 of human DDX28 (NP_060850.2).

Storage:

Store at -20°C. Avoid freeze / thaw cycles. Buffer: PBS with 0.02% sodium azide, 50% glycerol, pH7.3.

Product Images



Western blot - DDX28 Polyclonal Antibody (CAB17728)