

Cyclin D2 Rabbit Polyclonal Antibody



CAB1773

Product Information

Size:

20uL, 50uL, 100uL, 200uL

Observed MW:

37kDa

Calculated MW:

24kDa/33kDa

Applications:

WB IHC IF

Reactivity:

Human, Mouse, Rat

Antibody Information

Recommended dilutions:

WB 1:500 - 1:2000 IHC 1:50
- 1:100 IF 1:50 - 1:100

Source:

Rabbit

Isotype:

IgG

Purification:

Affinity purification

Protein Background

The protein encoded by this gene belongs to the highly conserved cyclin family, whose members are characterized by a dramatic periodicity in protein abundance through the cell cycle. Cyclins function as regulators of CDK kinases. Different cyclins exhibit distinct expression and degradation patterns which contribute to the temporal coordination of each mitotic event. This cyclin forms a complex with CDK4 or CDK6 and functions as a regulatory subunit of the complex, whose activity is required for cell cycle G1/S transition. This protein has been shown to interact with and be involved in the phosphorylation of tumor suppressor protein Rb. Knockout studies of the homologous gene in mouse suggest the essential roles of this gene in ovarian granulosa and germ cell proliferation. High level expression of this gene was observed in ovarian and testicular tumors. Mutations in this gene are associated with megalencephaly-polymicrogyria-polydactyly-hydrocephalus syndrome 3 (MPPH3).

Immunogen information

Gene ID:

894

Uniprot

P30279

Synonyms:

CCND2; KIAK0002; MPPH3; cyclin D2; Cyclin D2

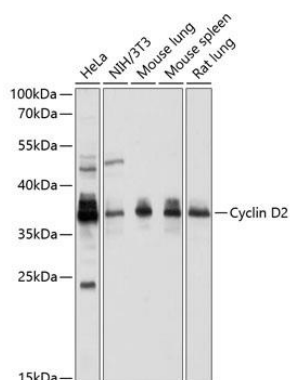
Immunogen:

Recombinant fusion protein containing a sequence corresponding to amino acids 1-289 of human Cyclin D2 (NP_001750.1).

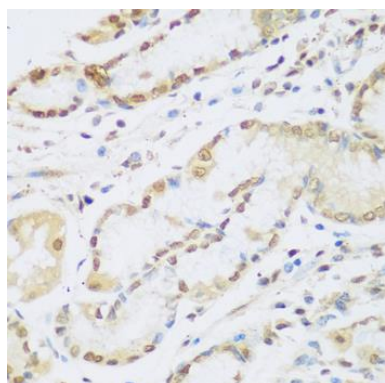
Storage:

Store at -20°C. Avoid freeze / thaw cycles. Buffer: PBS with 0.02% sodium azide, 50% glycerol, pH7.3.

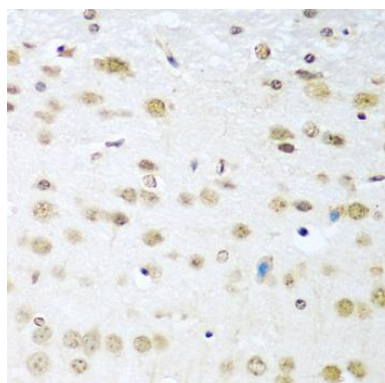
Product Images



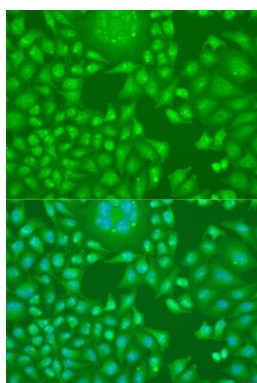
Western blot analysis of extracts of various cell lines, using Cyclin D2 antibody (CAB1773) at 1:1000 dilution. Secondary antibody: HRP Goat Anti-Rabbit IgG (H+L) (CABS014) at 1:10000 dilution. Lysates/proteins: 25ug per lane. Blocking buffer: 3% nonfat dry milk in TBST. Detection: ECL Basic Kit (CABM00020). Exposure time: 10s.



Immunohistochemistry of paraffin-embedded human stomach using Cyclin D2 antibody (CAB1773) at dilution of 1:100 (40x lens).



Immunohistochemistry of paraffin-embedded mouse brain using Cyclin D2 antibody (CAB1773) at dilution of 1:100 (40x lens).



Immunofluorescence analysis of U2OS cells using Cyclin D2 antibody (CAB1773) at dilution of 1:100. Blue: DAPI for nuclear staining.