

CENPN Rabbit Polyclonal Antibody



CAB17731

Product Information

Size:

20uL, 50uL, 100uL, 200uL

Observed MW:

38kDa

Calculated MW:

Applications:

WB

Reactivity:

Human, Mouse

Antibody Information

Recommended dilutions:

WB 1:500 - 1:2000

Source:

Rabbit

Isotype:

IgG

Purification:

Affinity purification

Protein Background

The protein encoded by this gene forms part of the nucleosome-associated complex and is important for kinetochore assembly. It is bound to kinetochores during S phase and G2 and recruits other proteins to the centromere. Pseudogenes of this gene are located on chromosome 2. Alternative splicing results in multiple transcript variants that encode different protein isoforms. [provided by RefSeq, Jul 2012]

Immunogen information

Gene ID:

55839

Uniprot

Q96H22

Synonyms:

BM039; C16orf60; CENP-N; ICEN32; CENPN

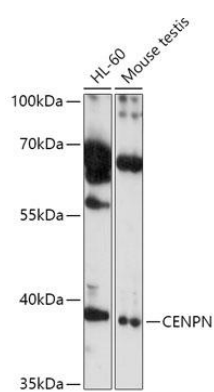
Immunogen:

Recombinant fusion protein containing a sequence corresponding to amino acids 180-300 of human CENPN (NP_001094094).

Storage:

Store at -20°C. Avoid freeze / thaw cycles. Buffer: PBS with 0.02% sodium azide, 50% glycerol, pH7.3.

Product Images



Western blot - CENPN Polyclonal Antibody (CAB17731)