

# POGLUT1 Rabbit Polyclonal Antibody



CAB17737

## Product Information

### Size:

20uL, 50uL, 100uL, 200uL

### Observed MW:

46kDa

### Calculated MW:

## Protein Background

This gene encodes a protein with both O-glucosyltransferase and O-xylosyltransferase activity which localizes to the lumen of the endoplasmic reticulum. This protein has a carboxy-terminal KTEL motif which is predicted to function as an endoplasmic reticulum retention signal. This gene is an essential regulator of Notch signalling and likely plays a role in cell fate and tissue formation during development. It may also play a role in the pathogenesis of leukemia. Mutations in this gene have been associated with the autosomal dominant genodermatosis Dowling-Degos disease 4. Alternative splicing results in multiple transcript variants. [provided by RefSeq, Apr 2014]

## Immunogen information

### Applications:

WB IF

### Reactivity:

Mouse, Rat

### Gene ID:

56983

### Uniprot

Q8NBL1

### Synonyms:

C3orf9; CLP46; KDELCL1; KTELC1; LGMD2Z; MDS010; MDSRP; Rumi; hCLP46; POGLUT1

## Antibody Information

### Recommended dilutions:

WB 1:500 - 1:2000 IF 1:50 - 1:200

### Source:

Rabbit

### Isotype:

IgG

### Immunogen:

Recombinant fusion protein containing a sequence corresponding to amino acids 160-280 of human POGLUT1 (NP\_689518.1).

### Storage:

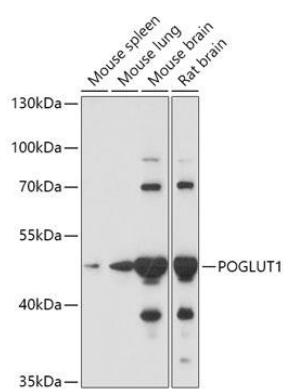
Store at -20°C. Avoid freeze / thaw cycles. Buffer: PBS with 0.02% sodium azide, 50% glycerol, pH7.3.

### Purification:

Affinity purification

## Product Images

---



Western blot - POGLUT1 Polyclonal Antibody (CAB17737)