

# IGF2BP2 Rabbit Polyclonal Antibody



CAB1774

---

## Product Information

### Size:

20uL, 50uL, 100uL, 200uL

### Observed MW:

70kDa

### Calculated MW:

54kDa/58kDa/59kDa/61kDa/  
66kDa

### Applications:

WB IHC IF

### Reactivity:

Human, Mouse, Rat

## Antibody Information

### Recommended dilutions:

WB 1:500 - 1:2000 IHC 1:50  
- 1:100 IF 1:50 - 1:100

### Source:

Rabbit

### Isotype:

IgG

### Purification:

Affinity purification

## Protein Background

This gene encodes a member of the IGF-II mRNA-binding protein (IMP) family. The protein encoded by this gene contains four KH domains and two RRM domains. It functions by binding to the 5' UTR of the insulin-like growth factor 2 (IGF2) mRNA and regulating IGF2 translation. Alternative promoter usage and alternate splicing result in multiple variants encoding different isoforms.

## Immunogen information

### Gene ID:

10644

### Uniprot

Q9Y6M1

### Synonyms:

IGF2BP2; IMP-2; IMP2; VICKZ2

### Immunogen:

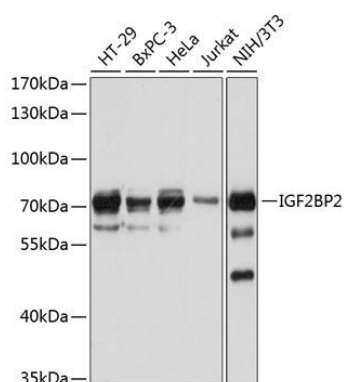
Recombinant fusion protein containing a sequence corresponding to amino acids 330-599 of human IGF2BP2 (NP\_006539.3).

### Storage:

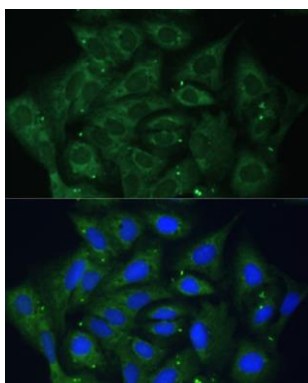
Store at -20°C. Avoid freeze / thaw cycles. Buffer: PBS with 0.02% sodium azide, 50% glycerol, pH7.3.

## Product Images

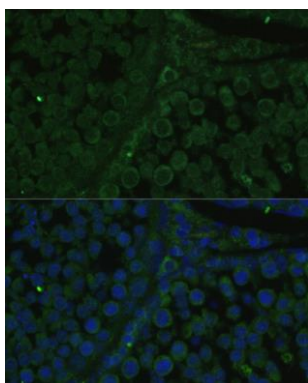
---



Western blot analysis of extracts of various cell lines, using IGF2BP2 antibody (CAB1774) at 1:1000 dilution. Secondary antibody: HRP Goat Anti-Rabbit IgG (H+L) (CABS014) at 1:10000 dilution. Lysates/proteins: 25ug per lane. Blocking buffer: 3% nonfat dry milk in TBST. Detection: ECL Basic Kit (CABM00020). Exposure time: 30s.



Immunofluorescence analysis of U-2 OS cells using IGF2BP2 antibody (CAB1774) at dilution of 1:100. Blue: DAPI for nuclear staining.



Immunofluorescence analysis of rat testis cells using IGF2BP2 antibody (CAB1774) at dilution of 1:100. Blue: DAPI for nuclear staining.