

RANBP10 Rabbit Polyclonal Antibody



CAB17742

Product Information

Size:

20uL, 50uL, 100uL, 200uL

Observed MW:

73kDa

Calculated MW:

58kDa/64kDa/67kDa

Applications:

WB

Reactivity:

Human, Mouse

Antibody Information

Recommended dilutions:

WB 1:500 - 1:2000

Source:

Rabbit

Isotype:

IgG

Purification:

Affinity purification

Protein Background

RAN is a small GTPase involved in the assembly of microtubules to form mitotic spindles. The protein encoded by this gene is a cytoplasmic guanine nucleotide exchange factor (GEF) that binds beta-tubulin and has GEF activity toward RAN. The encoded protein plays a role in the formation of noncentrosomal microtubules. In addition, this protein may be involved in the regulation of D(1) receptor signaling by protein kinase C delta and protein kinase C gamma. Several transcript variants encoding different isoforms have been found for this gene. [provided by RefSeq, Feb 2016]

Immunogen information

Gene ID:

57610

Uniprot

Q6VN20

Synonyms:

RANBP10

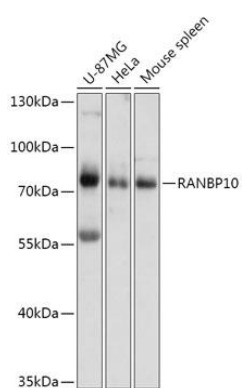
Immunogen:

Recombinant fusion protein containing a sequence corresponding to amino acids 362-497 of human RANBP10 (NP_065901.1).

Storage:

Store at -20°C. Avoid freeze / thaw cycles. Buffer: PBS with 0.02% sodium azide, 50% glycerol, pH7.3.

Product Images



Western blot - RANBP10 Polyclonal Antibody (CAB17742)