

# BUB1B Rabbit Polyclonal Antibody



CAB1775

---

## Product Information

### Size:

20uL, 50uL, 100uL, 200uL

### Observed MW:

55kDa/120kDa

### Calculated MW:

105kDa/119kDa/121kDa

### Applications:

WB IHC IF

### Reactivity:

Human, Mouse, Rat

## Antibody Information

### Recommended dilutions:

WB 1:500 - 1:2000 IHC 1:50  
- 1:200 IF 1:50 - 1:200

### Source:

Rabbit

### Isotype:

IgG

### Purification:

Affinity purification

## Protein Background

This gene encodes a kinase involved in spindle checkpoint function. The protein has been localized to the kinetochore and plays a role in the inhibition of the anaphase-promoting complex/cyclosome (APC/C), delaying the onset of anaphase and ensuring proper chromosome segregation. Impaired spindle checkpoint function has been found in many forms of cancer.

## Immunogen information

### Gene ID:

701

### Uniprot

O60566

### Synonyms:

BUB1B; BUB1beta; BUBR1; Bub1A; MAD3L; MVA1; SSK1; hBUBR1

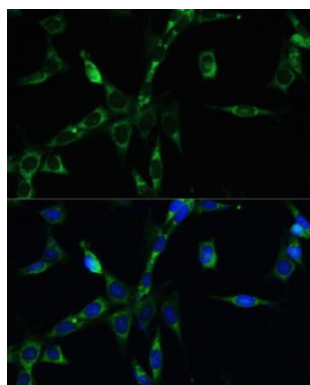
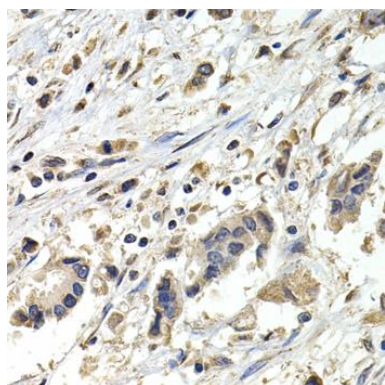
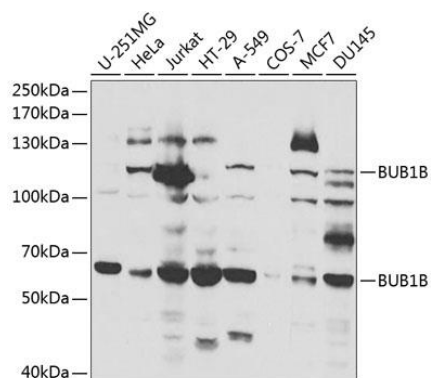
### Immunogen:

Recombinant fusion protein containing a sequence corresponding to amino acids 1-260 of human BUB1B (NP\_001202.4).

### Storage:

Store at -20°C. Avoid freeze / thaw cycles. Buffer: PBS with 0.02% sodium azide, 50% glycerol, pH7.3.

## Product Images



Western blot analysis of extracts of various cell lines, using BUB1B antibody (CAB1775) at 1:1000 dilution. Secondary antibody: HRP Goat Anti-Rabbit IgG (H+L) (CABS014) at 1:10000 dilution. Lysates/proteins: 25ug per lane. Blocking buffer: 3% nonfat dry milk in TBST.

Immunohistochemistry of paraffin-embedded human breast cancer using BUB1B antibody (CAB1775) at dilution of 1:200 (40x lens).

Immunofluorescence analysis of NIH-3T3 cells using BUB1B antibody (CAB1775) at dilution of 1:100. Blue: DAPI for nuclear staining.