

# CHTF18 Rabbit Polyclonal Antibody



CAB17752

## Product Information

### Size:

20uL, 50uL, 100uL, 200uL

### Observed MW:

130kDa

### Calculated MW:

### Applications:

WB IF

### Reactivity:

Human, Rat

## Antibody Information

### Recommended dilutions:

WB 1:500 - 1:2000 IF 1:50 - 1:200

### Source:

Rabbit

### Isotype:

IgG

### Purification:

Affinity purification

## Protein Background

This gene encodes a protein which is a component of a replication factor C (RFC) complex, which loads proliferating cell nuclear antigen (PCNA) on to DNA during the S phase of cell cycle. The encoded protein may interact with other proteins, including RFC complex 3, to form a clamp loader complex that plays a role in sister chromatid cohesion during metaphase-anaphase transition. [provided by RefSeq, Jan 2016]

## Immunogen information

### Gene ID:

63922

### Uniprot

Q8WVB6

### Synonyms:

C16orf41; C321D2.2; C321D2.3; C321D2.4; CHL12; Ctf18; RUVBL; CHTF18

### Immunogen:

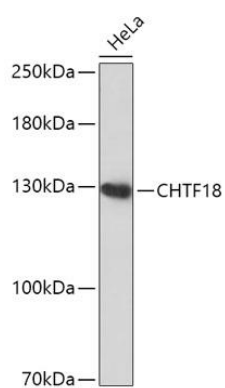
Recombinant fusion protein containing a sequence corresponding to amino acids 794-975 of human CHTF18 (NP\_071375.1).

### Storage:

Store at -20°C. Avoid freeze / thaw cycles. Buffer: PBS with 0.02% sodium azide, 50% glycerol, pH7.3.

## Product Images

---



Western blot - CHTF18 Polyclonal Antibody (CAB17752)