

RHBDF1 Rabbit Polyclonal Antibody



CAB17754

Product Information

Size:

20uL, 50uL, 100uL, 200uL

Observed MW:

97kDa

Calculated MW:

Applications:

WB IF

Reactivity:

Mouse, Rat

Antibody Information

Recommended dilutions:

WB 1:500 - 1:2000 IF 1:50 - 1:200

Source:

Rabbit

Isotype:

IgG

Purification:

Affinity purification

Protein Background

Immunogen information

Gene ID:

64285

Uniprot

Q96CC6

Synonyms:

C16orf8; Dist1; EGFR-RS; gene-89; gene-90; hDist1; RHBDF1

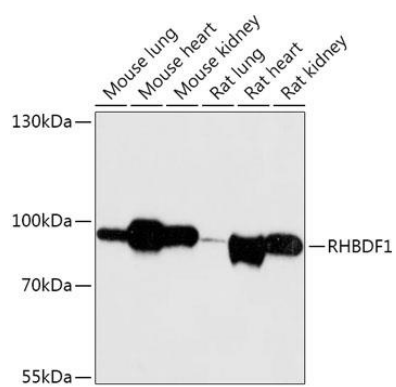
Immunogen:

Recombinant fusion protein containing a sequence corresponding to amino acids 200-400 of human RHBDF1 (NP_071895.3).

Storage:

Store at -20°C. Avoid freeze / thaw cycles. Buffer: PBS with 0.02% sodium azide, 50% glycerol, pH7.3.

Product Images



Western blot - RHBDF1 Polyclonal Antibody (CAB17754)