

# GGT1 Rabbit Polyclonal Antibody



CAB1776

## Product Information

### Size:

20uL, 50uL, 100uL, 200uL

### Observed MW:

60-70kDa

### Calculated MW:

24kDa/39kDa/61kDa

### Applications:

WB IHC

### Reactivity:

Human, Mouse, Rat

## Antibody Information

### Recommended dilutions:

WB 1:500 - 1:2000 IHC 1:50  
- 1:200

### Source:

Rabbit

### Isotype:

IgG

### Purification:

Affinity purification

## Protein Background

The enzyme encoded by this gene is a type I gamma-glutamyltransferase that catalyzes the transfer of the glutamyl moiety of glutathione to a variety of amino acids and dipeptide acceptors. The enzyme is composed of a heavy chain and a light chain, which are derived from a single precursor protein. It is expressed in tissues involved in absorption and secretion and may contribute to the etiology of diabetes and other metabolic disorders. Multiple alternatively spliced variants have been identified. There are a number of related genes present on chromosomes 20 and 22, and putative pseudogenes for this gene on chromosomes 2, 13, and 22.

## Immunogen information

### Gene ID:

2678

### Uniprot

P19440

### Synonyms:

GGT1; CD224; D22S672; D22S732; GGT; GGT 1; GTG

### Immunogen:

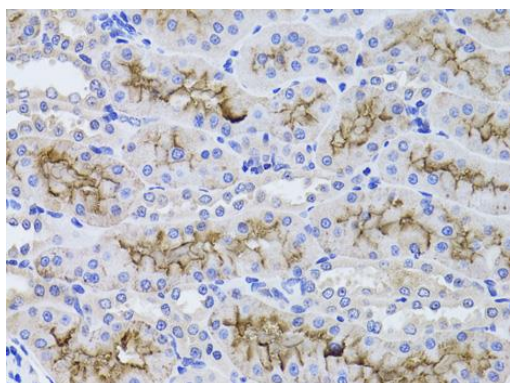
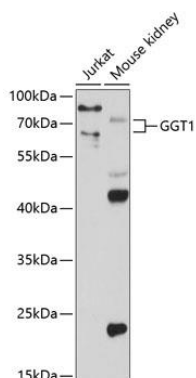
Recombinant fusion protein containing a sequence corresponding to amino acids 370-569 of human GGT1 (NP\_001027537.1).

### Storage:

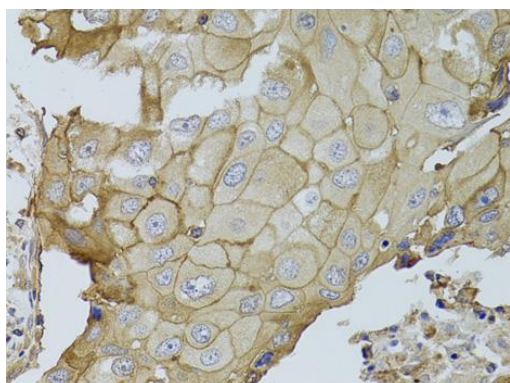
Store at -20°C. Avoid freeze / thaw cycles. Buffer: PBS with 0.02% sodium azide, 50% glycerol, pH7.3.

## Product Images

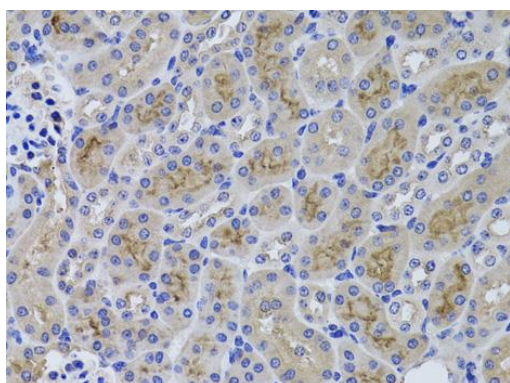
---



Immunohistochemistry of paraffin-embedded rat kidney using GGT1 antibody (CAB1776) at dilution of 1:100 (40x lens).



Immunohistochemistry of paraffin-embedded human breast cancer using GGT1 antibody (CAB1776) at dilution of 1:100 (40x lens).



Immunohistochemistry of paraffin-embedded mouse kidney using GGT1 antibody (CAB1776) at dilution of 1:100 (40x lens).