

# PYCRL Rabbit Polyclonal Antibody



CAB17763

## Product Information

### Size:

20uL, 50uL, 100uL, 200uL

### Observed MW:

35kDa

### Calculated MW:

### Applications:

WB

### Reactivity:

Mouse

## Antibody Information

### Recommended dilutions:

WB 1:500 - 1:2000

### Source:

Rabbit

### Isotype:

IgG

### Purification:

Affinity purification

## Protein Background

This gene encodes a protein that belongs to the pyrroline-5-carboxylate reductase family of enzymes. Members of this family catalyze the final step in proline biosynthesis, converting pyrroline-5-carboxylate to proline. Glutamate and ornithine are precursors in the synthesis of proline. The protein encoded by this gene is a cytoplasmic enzyme involved in the biosynthesis of proline from ornithine. [provided by RefSeq, Aug 2016]

## Immunogen information

### Gene ID:

65263

### Uniprot

Q53H96

### Synonyms:

PYCRL

### Immunogen:

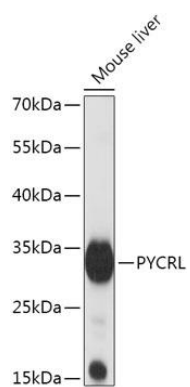
Recombinant fusion protein containing a sequence corresponding to amino acids 13-286 of human PYCRL (NP\_075566.2).

### Storage:

Store at -20°C. Avoid freeze / thaw cycles. Buffer: PBS with 0.02% sodium azide, 50% glycerol, pH7.3.

## Product Images

---



Western blot - PYCRL Polyclonal Antibody (CAB17763)